

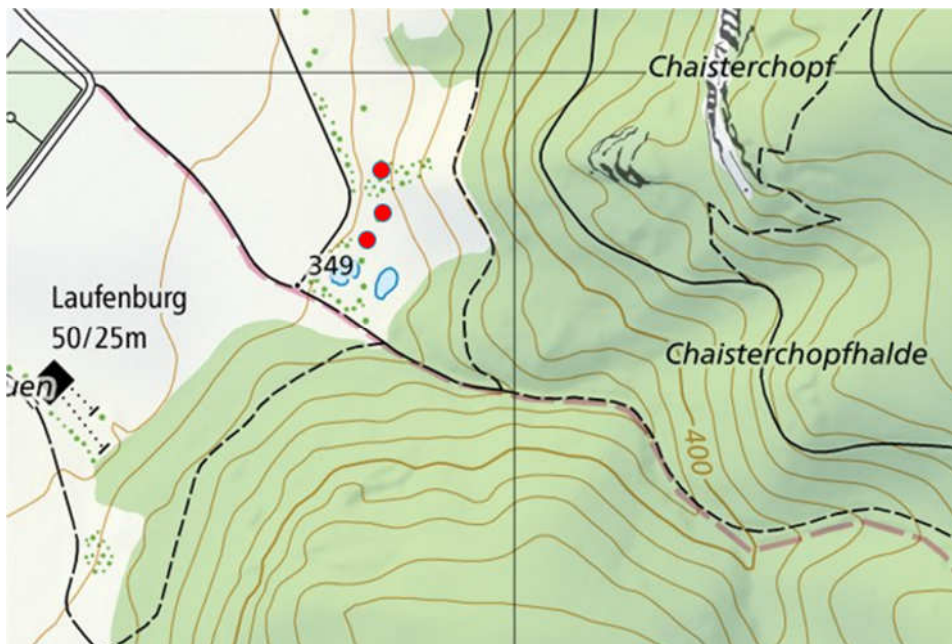
# Bauminventar NVSL

## Altes Bündtli



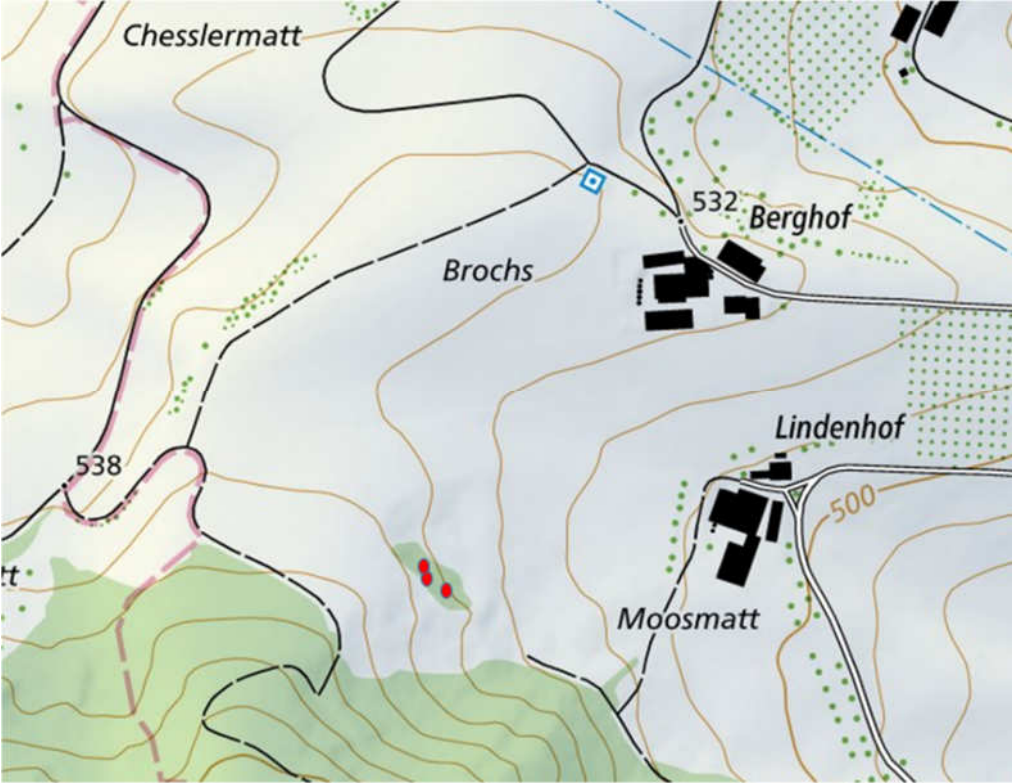
1 Apfelbaum

## Blauen Laufenburg



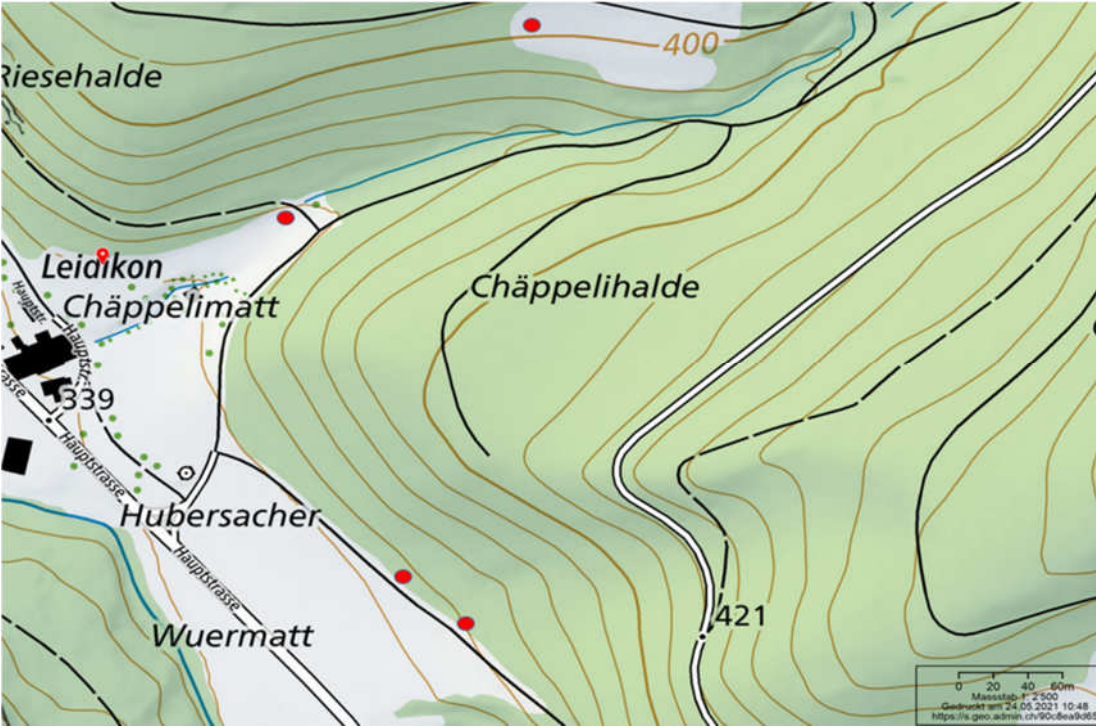
1 Apfelbaum, 1 Zwetschenbaum, 1 Kirschbaum

### Brochs



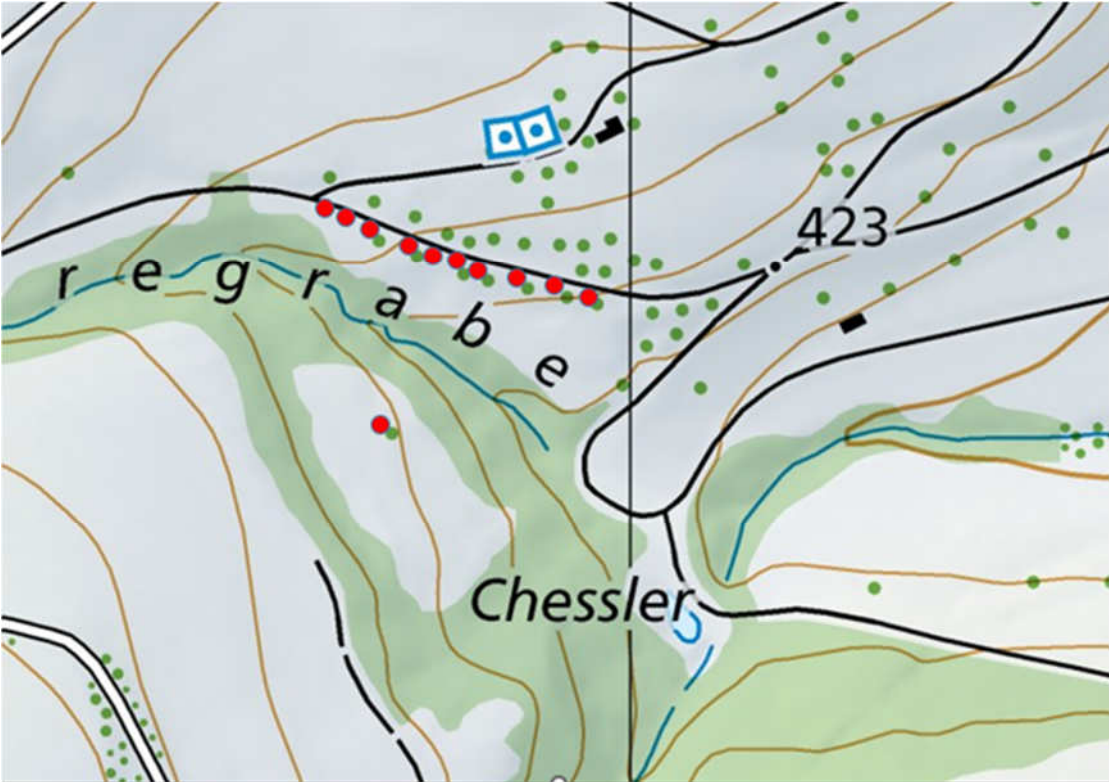
3 Apfelbäume

### Chäppelhalde Leidikon



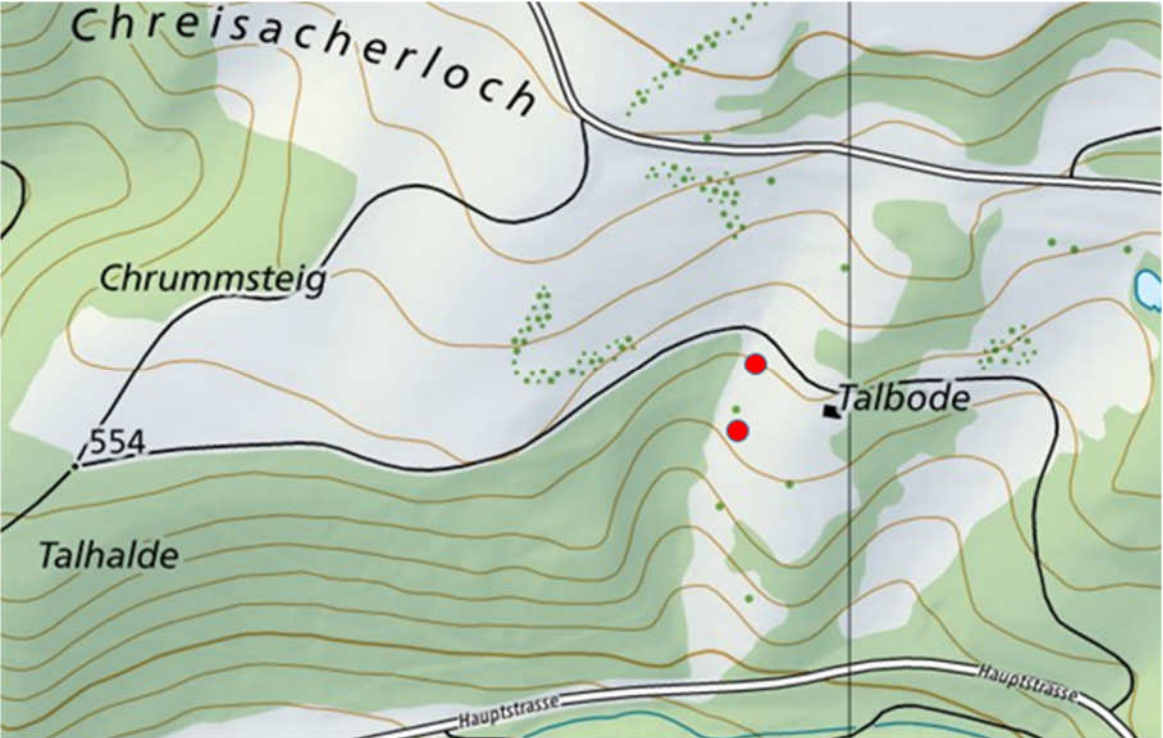
4 Apfelbäume

**Chessler**



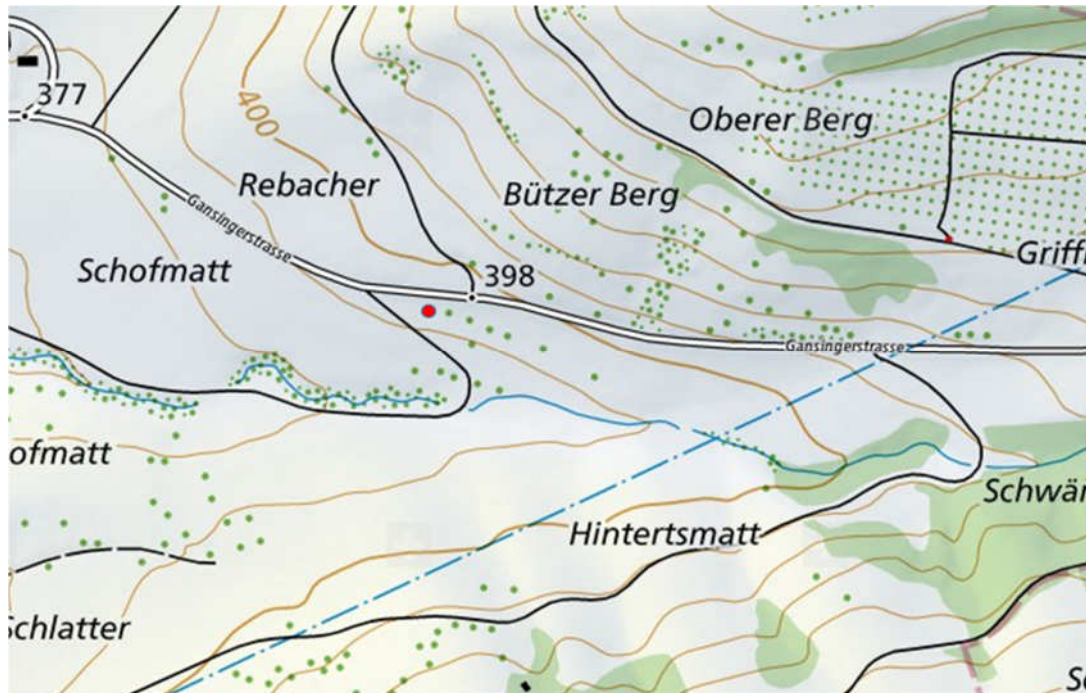
10 Zwetschgenbäume, 1 Apfelbaum Bockmatte

**Cheisacherloch**



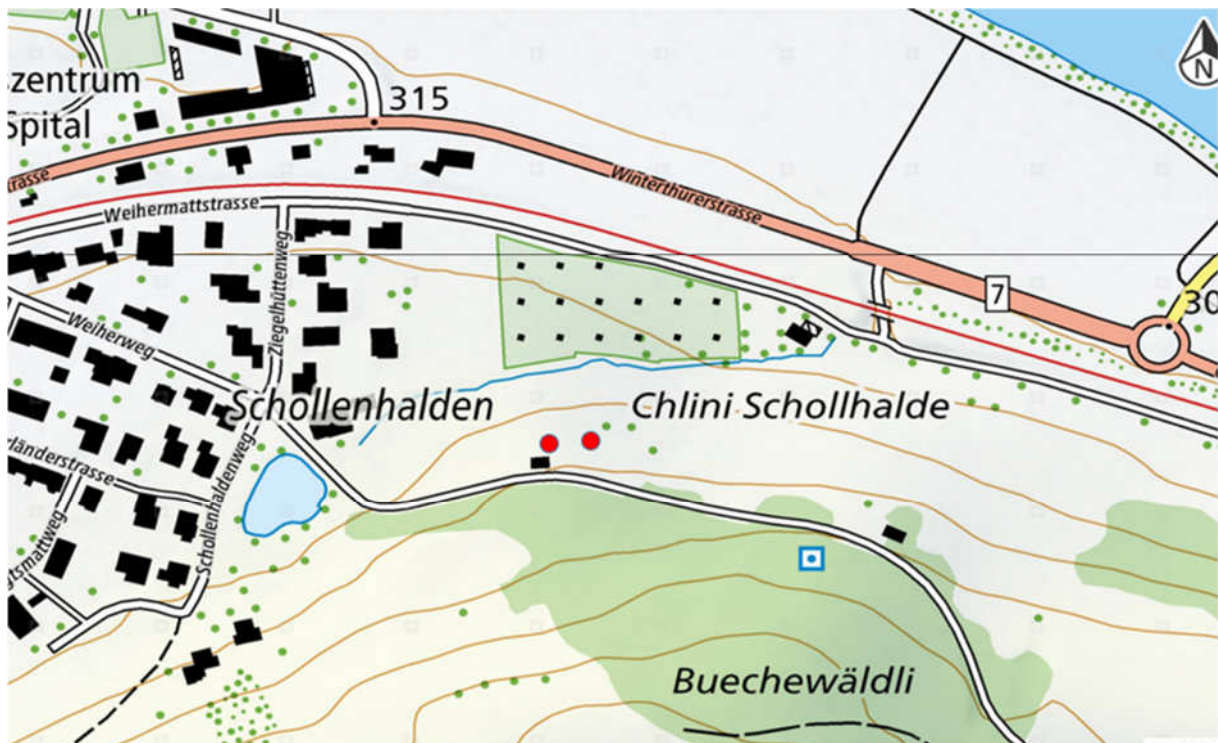
2 Birnbäume

## Hintertsmatt



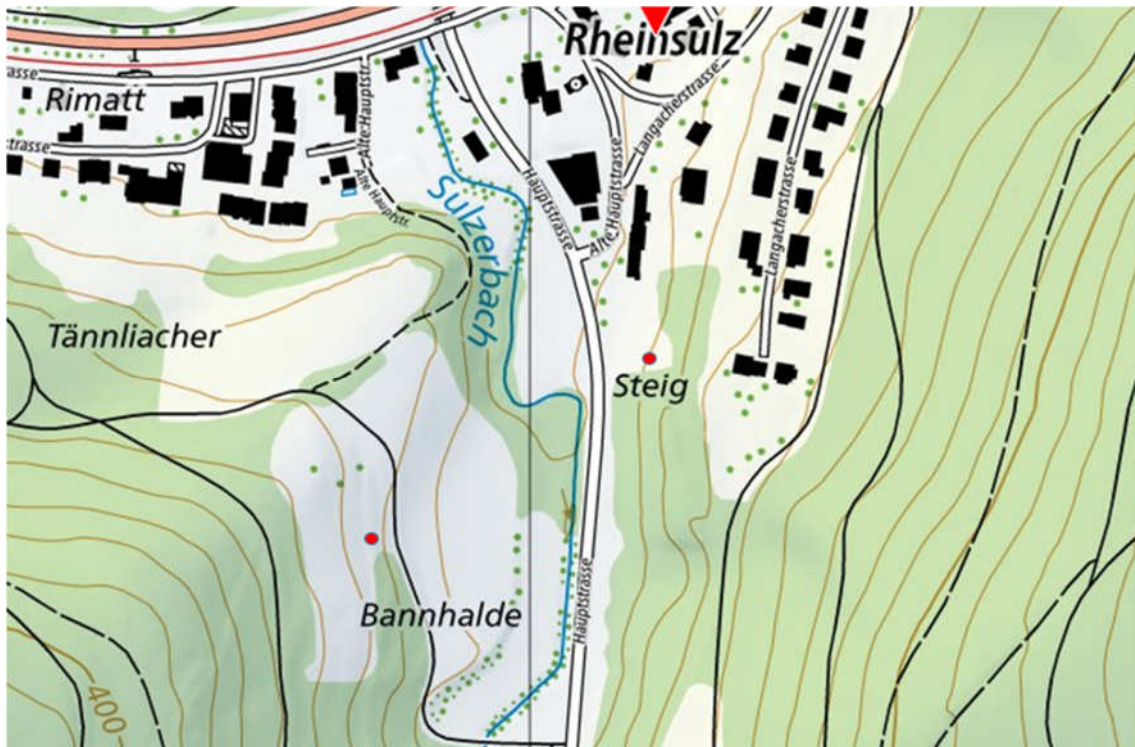
1 Apfelbaum, gepflanzt am 11. Oktober 2018 im Gedenken an Fritz Ledermann

## Schollendhalde Laufenburg



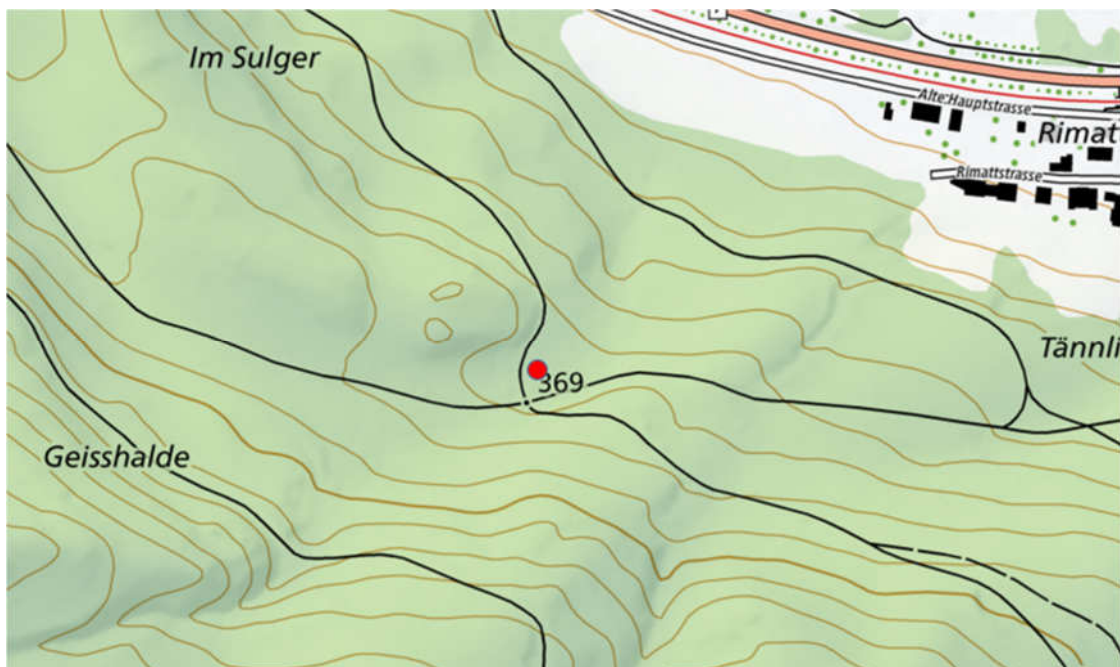
2 Apfelbäume Wilerrot

## Sulger Rheinsulz



Bannhalde: 1 Zwetschenbaum, Rheinsulz: 1 Apfelbaum

## Sulger alte Kehrrechtdeponie



1 Apfelbaum

Sulz, im Frühjahr 2022 / Roland Keller